



Everest and 4X4 PRO mainboard exchange

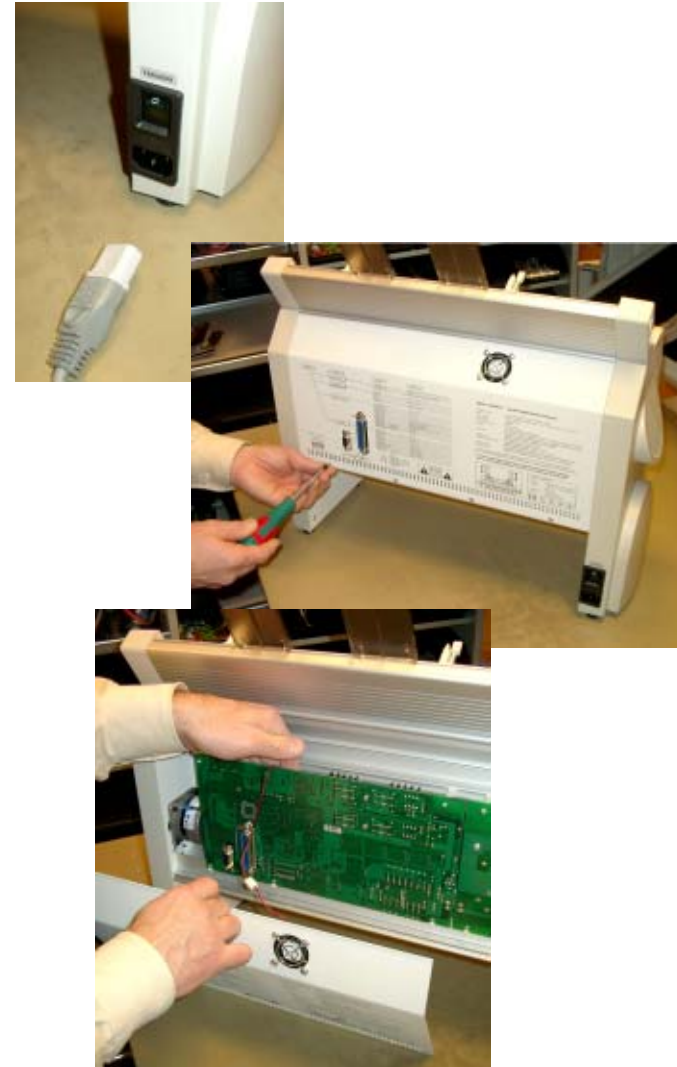
Mr Bjorn Lofstedt

*Index Braille opens
the door to Windows*



Open back plate

- **Disconnect power and communication cable**
- **Unscrew the four screws on the backplate (PH #2)**
- **Flip out the board before disconnecting the fan cable**
- **Remove the back plate**



Flip out the boards

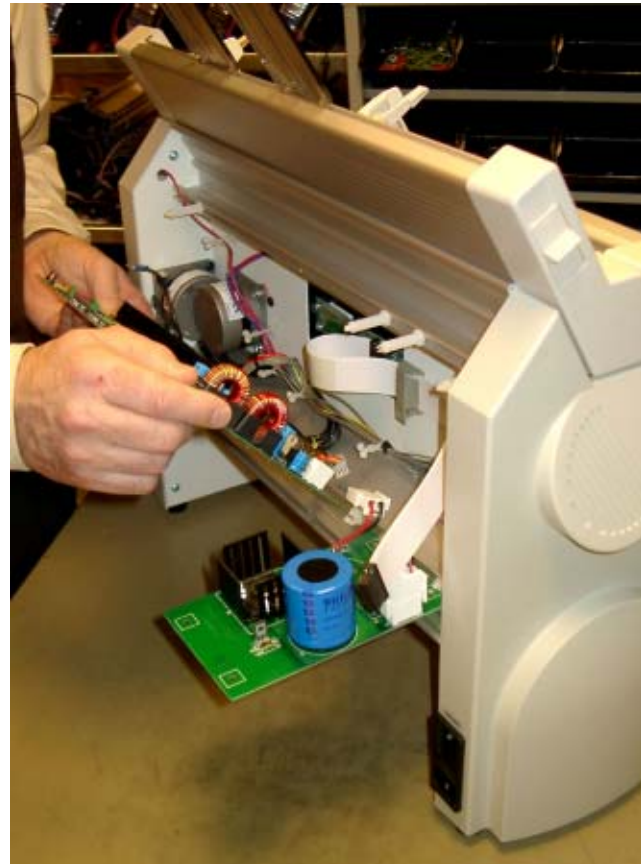
- **Open the plastic clips on the upper edge of the boards**
- **Flip out the boards carefully**





..... Disconnect the board

- **Disconnect all cables to the board you will exchange**
- **Hold the board in 45 degrees angle to the embosser and lift it**



Install a new board

- **Hold the board in 45 degrees angle to the embosser and adjust the holes to the plastic connectors**
- **Connect all cables**
- **Power on the unit and make a test printout**
- **Flip up the board and secure it in the top plastic board holders**
- **Mount the back plate, check carefully that the connector holding steel clips to Centronics port is correctly placed outside of the backplate**



Calibrate the paper

- Before starting to test the unit it is necessary to calibrate the paper.**
- **See instructions "Paper calibration Everest/4X4"**
 - **After paper calibration check that the page layout seems to be OK. Press "value" and lines per page and characters per line will be echoed out**



Function test

- **Make a power on "on line" + "on line" test printout.**
- **Check that printout and vertical alignment of all hammers are OK.**
- **Make a volume test with minimum 20 pages. Power on + "off line" starts this test**
- **Adjust vertical alignment if necessary**
....program\index_braille\hammer



Possible questions

- **Vertical alignment is not OK.**
 - a) **Run the hammer program, program/index braille/hammer**
 - b) **Gear wheel on printhead motor is loose, use Loctite 638**
- **Page layout on the embosser seems strange. Make the paper calibration again, "item" + power on.**