



*Index Braille opens
the door to Windows*

Upgrade firmware v.11

Mr Bjorn Lofstedt



Before installation

The following information are required;

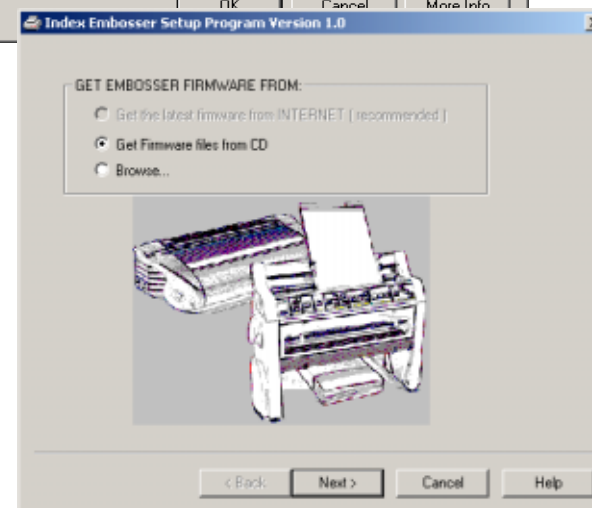
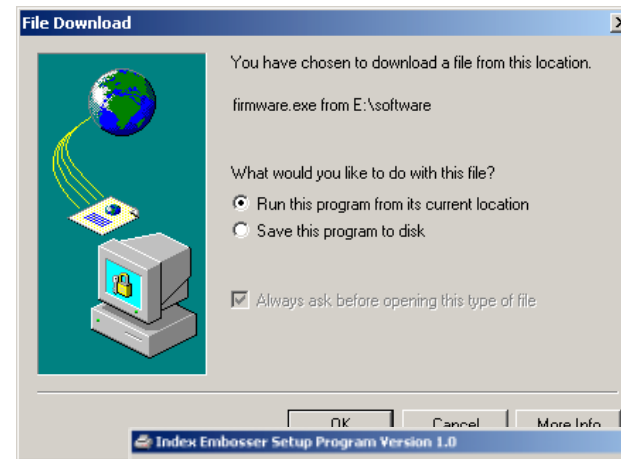
- **Type of embosser (Basic/Everest/4X4 PRO)**
- **Serial number of the embosser e.g. 3-bit (s/n <15000) or 4-bit (s/n >15000) mainboard**
- **Speech feedback language**
- **The embosser has to start up giving bep, beep, beep feedback after pressing "item" during power on**
- **Centronics communication to the embosser**



How to get firmware

Install firmware on your computer from:

- **From Index CD 2002**
- **Download from www.indexbraille.com**



Should the firmware be upgraded?

Before starting to upgrade the firmware it is important to check if it is necessary.

Upgrade is needed when;

- **The embosser is equipped with wrong speech feedback language**
- **If the embosser has a software problem**
- **If the embosser firmware is not compatible with your version of WinBraille**
- **If there is a hardware upgrade on your embosser that require new version of firmware**

Firmware and embosser version number

- **Version II embossers**
 - ◆ **All Basic-D/S V-II**
 - ◆ **Everest V-II s/n >12060 March 96**
Everest s/n 11304 feb-95 to 12060 Mars-96 has to be updated with exchange mainboard an backplate with rollers
 - ◆ **All 4X4 PRO V-II**
- **Version III embossers with e.g. USB and TCP/IP support, production start end of 2002**
- **3-bit/4-bit is related to the type of speech feedback, the functionality is identical**
 - ◆ **3-bit speech s/n <15.000**
 - ◆ **4-bit speech s/n >15.000 if equipped with original electronic mainboard**

Version	II	II	III
Speech	3-bit	4-bit	All
Basic-D/S	3.40	4.40	10.00
Everest	8.40	9.40	10.00
4X4 PRO	1.40	2.40	10.00

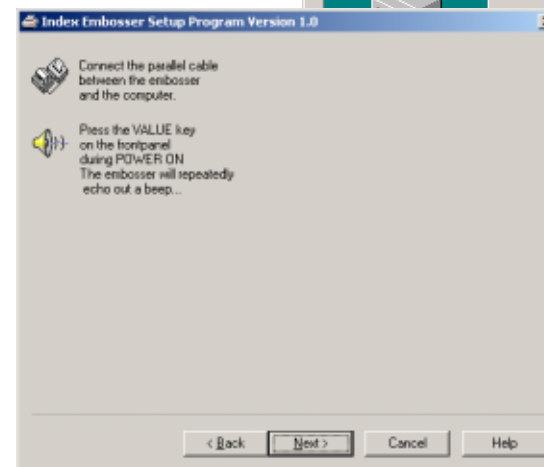
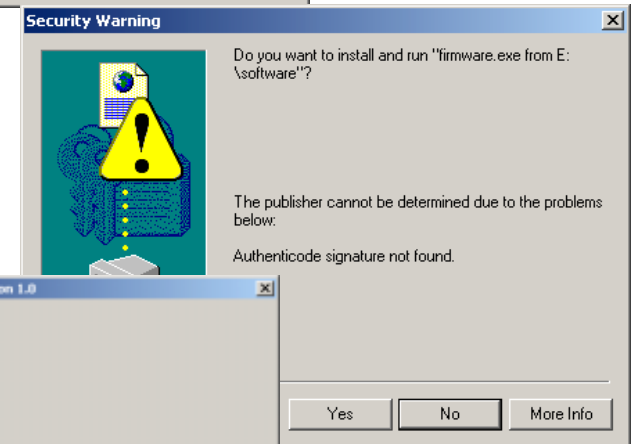
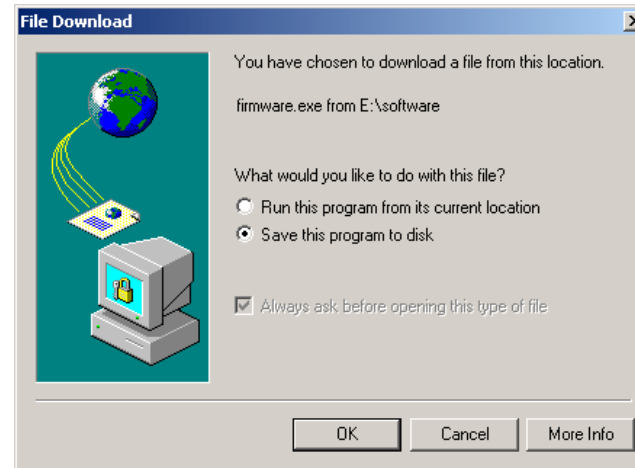
WinBraille and firmware versions

- For full functionality in WinBraille the corresponding firmware has to be installed. If old firmware is used, select "old embosser" and set up page layout on the embosser.
- 3-bit speech s/n <15000
4-bit speech s/n >15000
- 3 and 4 bit speech are equipped with different speech circuits, the functionality and quality of embossers are the same, e.g. Everest 8.21 and 9.21

	WinBraille	WinBraille
	Ver. 2.04	Ver. 3.00
Basic-D/S 3-bit	3.31	3.40
Basic-D/S 4-bit	4.00	4.40
Everest 3-bit	8.21	8.40
Everest 4-bit	9.21	9.40
4X4 PRO 3-bit	1.22	1.40
4X4 PRO 4-bit	2.02	2.40

Upgrading Firmware

- **Start program**
../program/index braille/firmware
- **Follow the instructions**
- **Open the embosser for firmware upgrade**
with pressing "value" during power on –
beep,, beep,,....
- **Complete the installation process**
- **On Everest or 4X4 PRO make a**
paper calibration
- pressing "item" during
power on...
see separate instructions



Error during firmware upgrade

- **Message "an error during transfer of data to the printer"**
 - **The cause of this can be;**
 - ◆ **Centronics port not in SPP mode**
 - ◆ **Bad or not connect grounding of the mainboard**
 - ◆ **Centronics cable not connected, to long or to low quality**
 - ◆ **Centronics port on computer to fast (modern)**
 - ◆ **Centronics port of embosser is faulty**
 - **Action;**
 - ◆ **Check SPP setting on computer**
 - ◆ **Change to a short good quality cable**
 - ◆ **Check grounding of mainboard**
 - ◆ **Test to upgrade using an older computer**
 - ◆ **Repeat the firmware upgrade 2-3 times**
 - ★ **If failing, order an exchange mainboard from Module replacement system**
- www.indexbraille.com**



Module replacement system

Index module replacement system gives you;

- **Quick module service all around the globe**
- **Fixed and reasonable prices for module exchange**
- **For details check www.indexbraille.com**

